

Spring Elms Lane, Little Baddow, Chelmsford, CM3

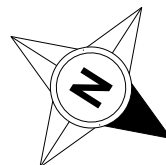
Approximate Area = 3274 sq ft / 304.1 sq m (includes garage1)

Limited Use Area(s) = 488 sq ft / 4.4 sq m

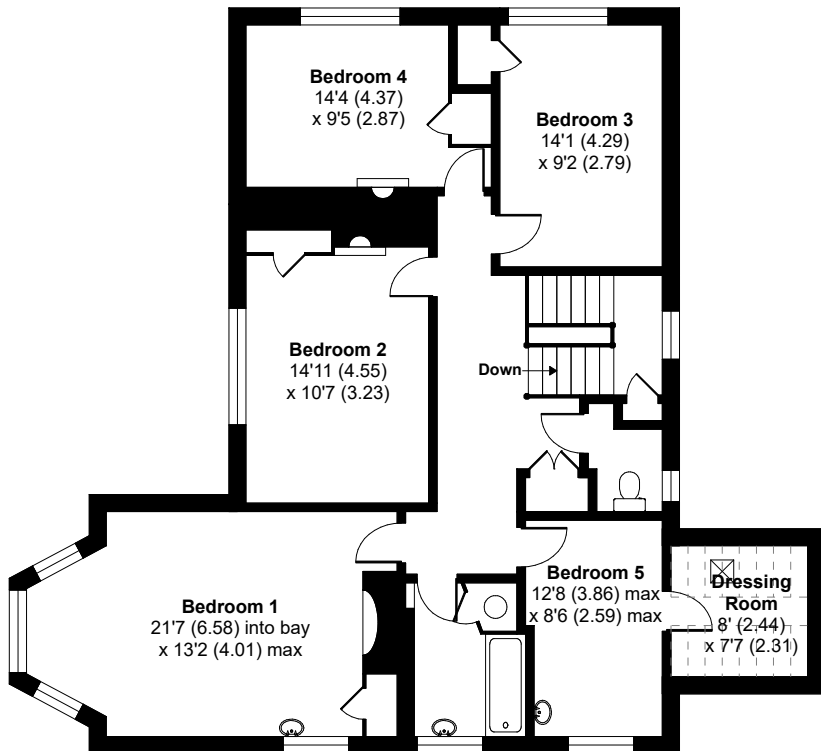
Garage2 = 210 sq ft / 19.5 sq m

Total = 3532 sq ft / 328.1 sq m

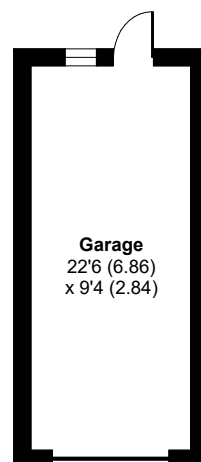
For identification only - Not to scale



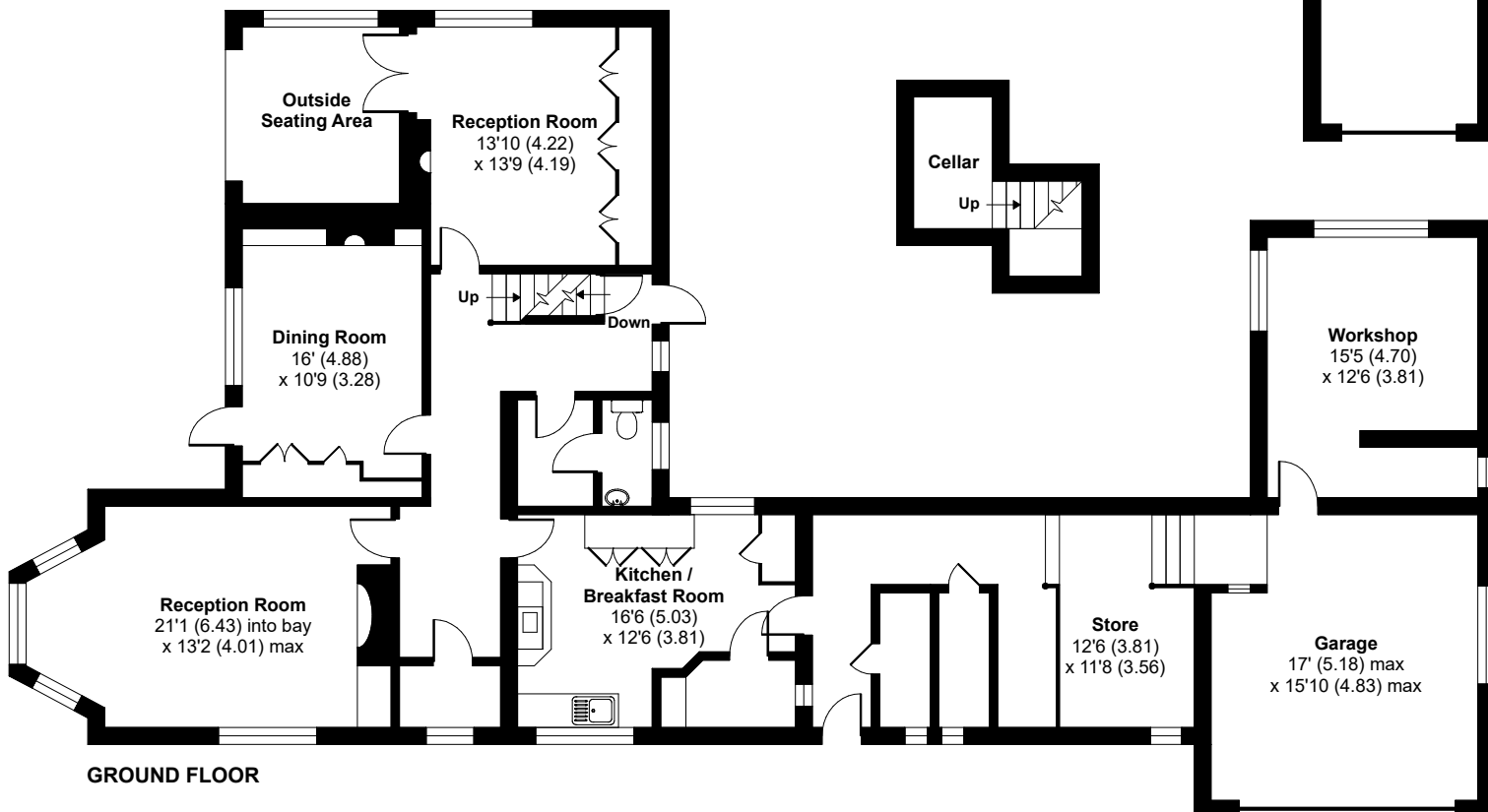
Denotes restricted head height



FIRST FLOOR



Garage
22'6 (6.86)
x 9'4 (2.84)



GROUND FLOOR

